



LoRa

LoRa Gateway LORIX One IP65 indoor EU 868Mhz



LoRa Gateway LORIX One IP65 indoor EU 868Mhz

Reference: LOIP65INEU868

Condition: New product

Characteristics:

- CPU ARM Cortex-A5 600MHz
- RAM 128 MBytes DDR2 200MHz
- NAND 512 MBytes flash with PMECC
- Linux Yocto 4.4
- Passive PoE 24V
- Ethernet 10/100
- SD-Card slot
- mini USB serial interface
- SX1301 gateway chip SPI based
- 8 channels, 49 demodulators @ 868 MHz
- RX Sensitivity -140 dbm
- TX power 27 dbm

549.00 CHF
VAT excl.

Quantity



LoRa Gateway LORIX One IP65 indoor EU 868Mhz - Wifx

- Gateway size 198 x 45 mm
- Packing size 530 x 60 x 140 mm (l x h x d)
- IP65 waterproof
- -30° to +55°C
- Hardware version 1.0d2

Package Contents:

- LoRa Gateway LORIX One IP65
- Indoor Antenna 2 dBm
- Mounting Loop
- 24V power adapter
- Injector PoE 24V

Links:

- [Product booklet](#)
- [Product user manual](#)
- [LORIX One's website](#)

NAND Memory size has changed from the version 1.0d2
Please take a look at the page <https://www.lorixone.io/wiki/versions> for more information

50 Items

VOLUME DISCOUNTS

Quantity	Discount	You Save
----------	----------	----------

Quantity	Discount	You Save
10	2%	Up to 109.80 CHF
20	3%	Up to 329.40 CHF
50	5%	Up to 1'372.50 CHF
100	8%	Up to 4'392.00 CHF
500	10%	Up to 27'450.00 CHF

AVIS

No customer reviews for the moment.

14 OTHER PRODUCTS IN THE SAME CATEGORY:



RBPOE



Power...



LoRa...



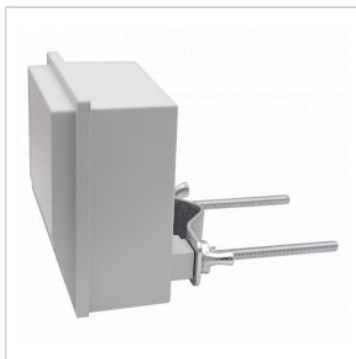
LoRa...



LoRa...



RBwAPR-2nD&...



Outdoor Poe...



Ubiquiti...



LoRa...



RBSXTR&R11E...



LoRa...



LoRa...




LoRa...



LoRa...

Store Information

 Wifx Sarl, Av. des Sciences 2 – 1400 Yverdon-les-Bains Switzerland



Call us now: +41 24 550 01 70