



Powered by
sedona
FRAMEWORK™

OxPAGE DESIGN GUIDE



Contents



Powered by
sedona
FRAMEWORK™

Page

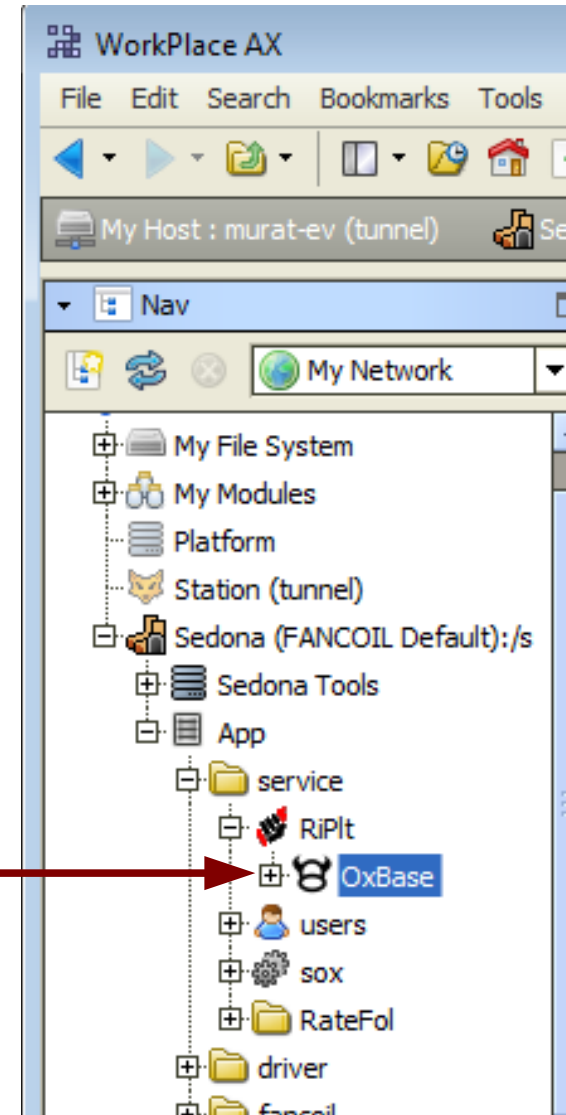
3	OxBase component
6	OxEditor view
9	Ox Widgets and properties
19	Data binding, fonts, images, file transfers
26	Password protected pages



OxBase component

OxBase is central to R-ION graphics functionality

OxBase must be present under platform service (and nowhere else)

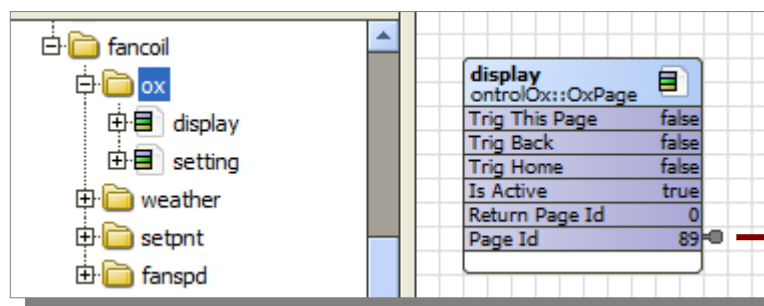
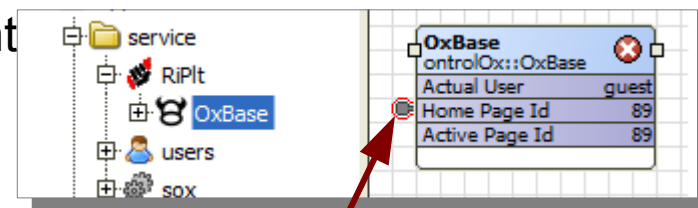




HomePageld property

This determines the oxPage that will be displayed on power-up.

- Do not set this directly. It is not a config property and will not be saved.
- The correct implementation is to establish a link :
 - from an oxPage's pageld slot
 - to oxBase's homePageld slot
- In this way, you will not need to worry about the componentId assigned automatically (outside your control) to an oxPage component. The link will provide the necessary information to the oxBase component.





LCD Brightness

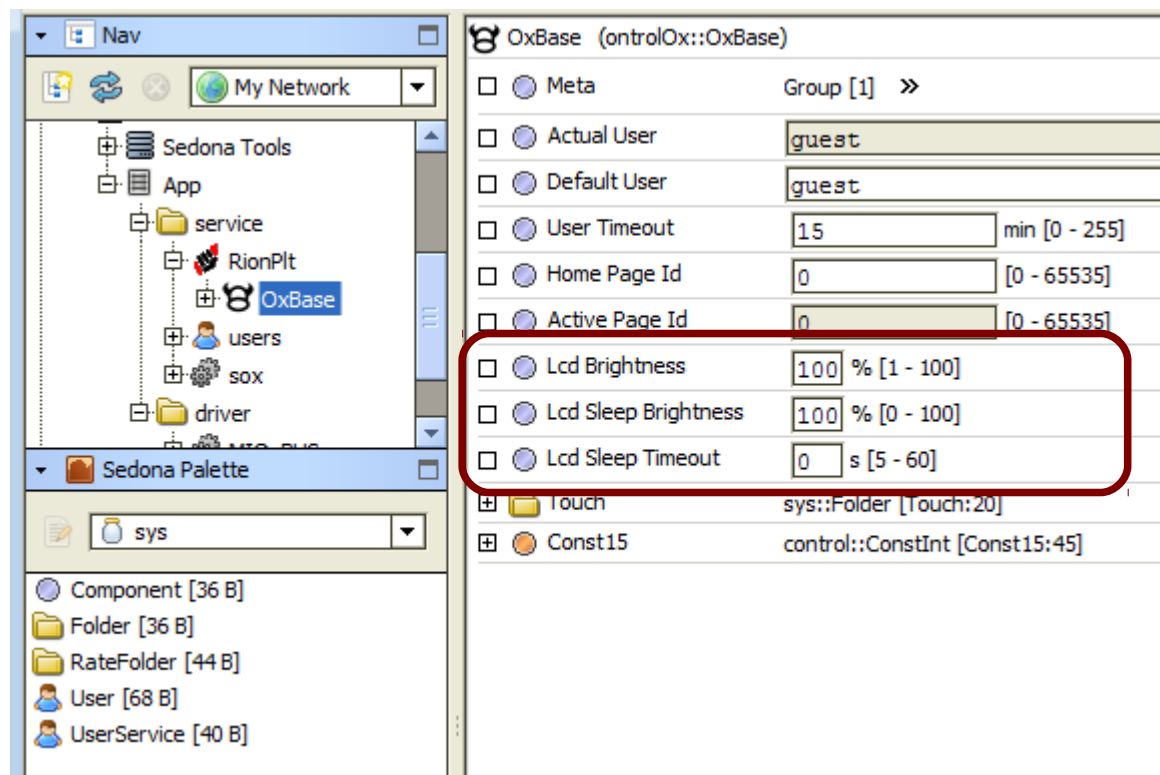
Brightness level, in percent, during normal use

LCD Sleep Brightness

Brightness level after a period has elapsed with no user interaction.

LCD Sleep Timeout

The period, in seconds, that the display will wait for a user interaction before activating the sleep brightness level



Note: These settings may affect temperature measurement adversely.

Do not set a long timeout period, or a high sleep brightness level.

Recommended values:

Sleep brightness : 0%

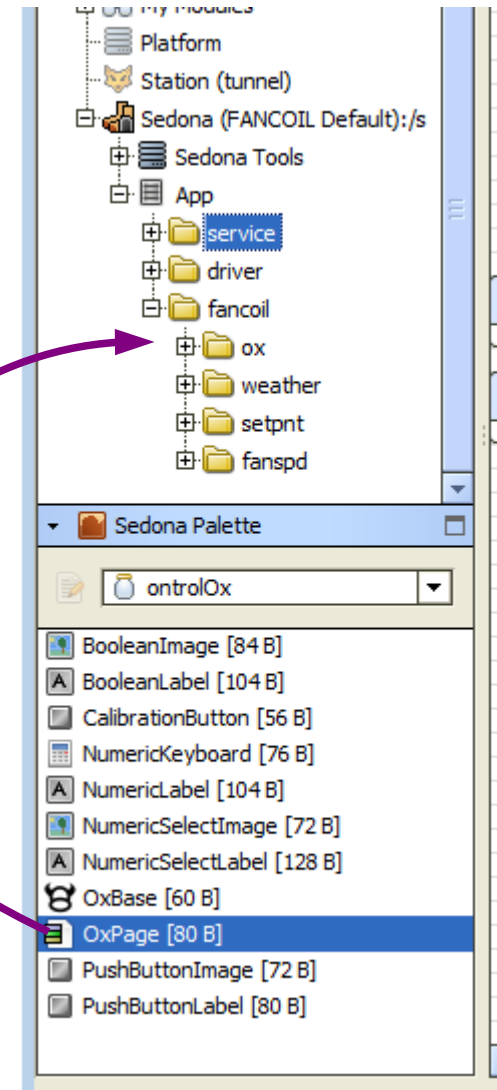
Sleep timeout : 20 seconds



Adding a new page

- In the Sedona Palette side bar, select ontrolOx palette from the dropdown box.
- Drag & Drop an OxPage component from the palette to any location in your App
- Double-click on the new OxPage to open the oxEditor view

drag&drop



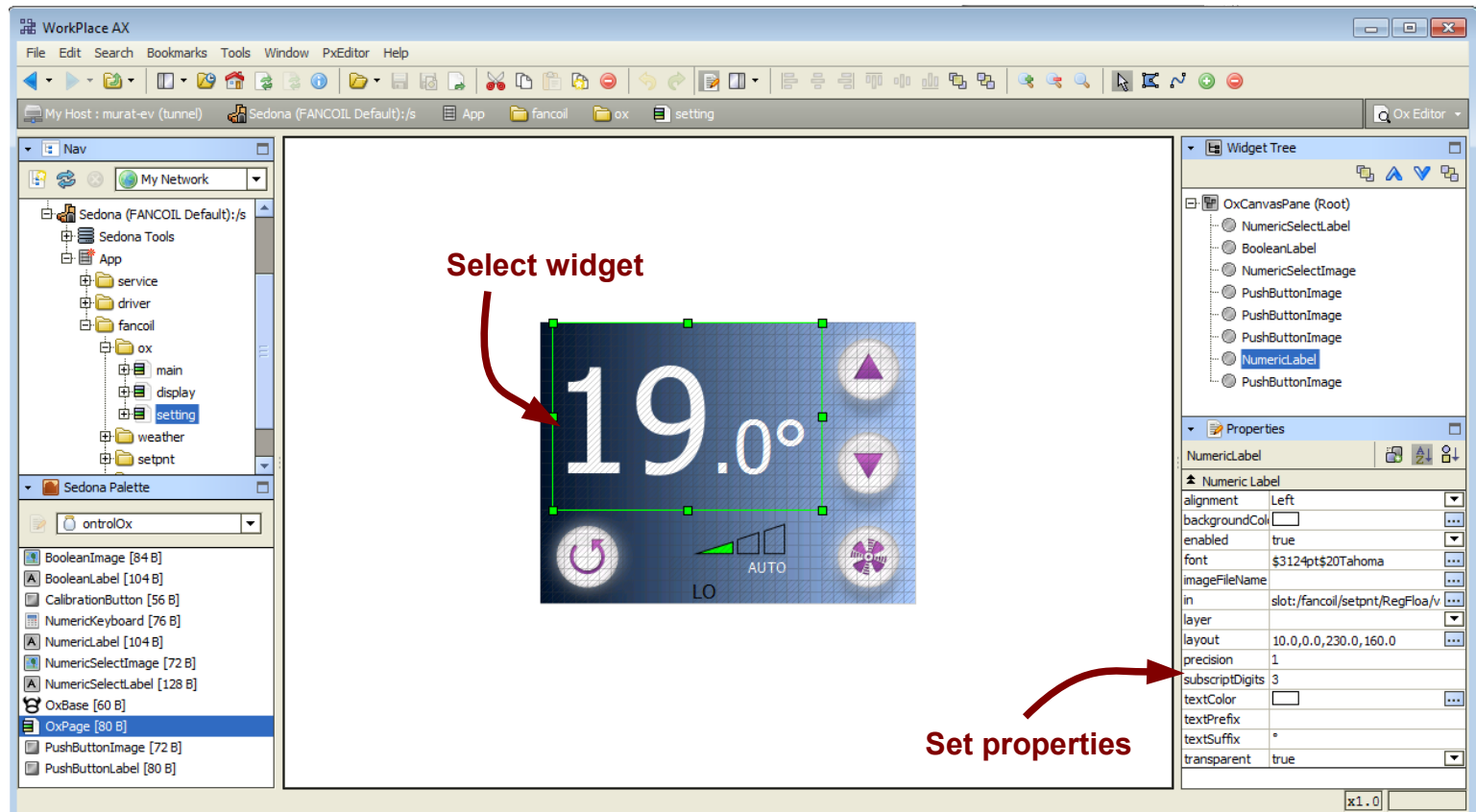


OxEditor view

Double-clicking on an OxPage component in the app tree opens the oxEditor view.

OxEditor view is used to edit RION graphics (oxPages).

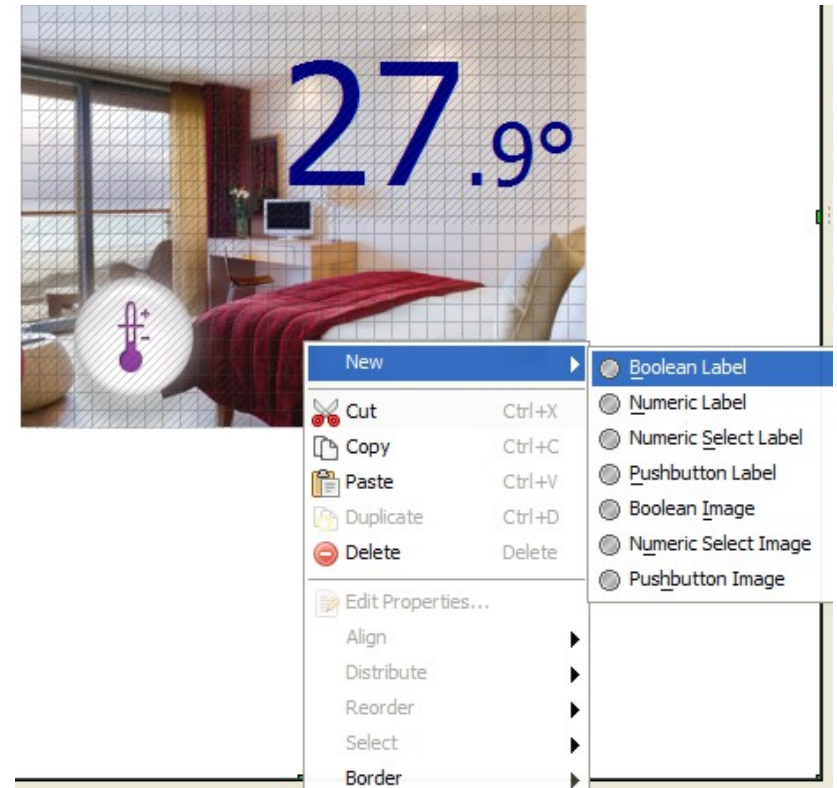
Workflow is very similar to Niagara px graphics design, with some limitations.





ADDING WIDGETS

- right-click on an empty area of the design window,
- click New,
- select from the list of available widgets.





NumericLabel	Displays a numeric data value
BooleanLabel	Displays one of two fixed texts, depending on a boolean value
NumericSelectLabel	Displays one of a range of fixed texts, depending on a <u>integer</u> value
BooleanImage	Displays one of two images, depending on a boolean value
NumericSelectImage	Displays one of a range of images, depending on a <u>integer</u> value
PushbuttonLabel¹	Displays a fixed text that can be touched to perform an action
PushbuttonImage¹	Displays an image that can be touched to perform an action
NumericLabelSet²	Displays a numeric value. Allows editing of the numeric value through a numeric keypad.
TimeLabelSet²	Displays a time value in the format hh:mm. Allows editing the value through a numeric keypad.

¹ Starting with OntrolOx kit version 1.06, most widgets have the ability to perform as buttons, mostly eliminating the need to use the two pushbutton widgets.

² Prior to OntrolOx kit version 1.06, this functionality was achieved with different widgets.



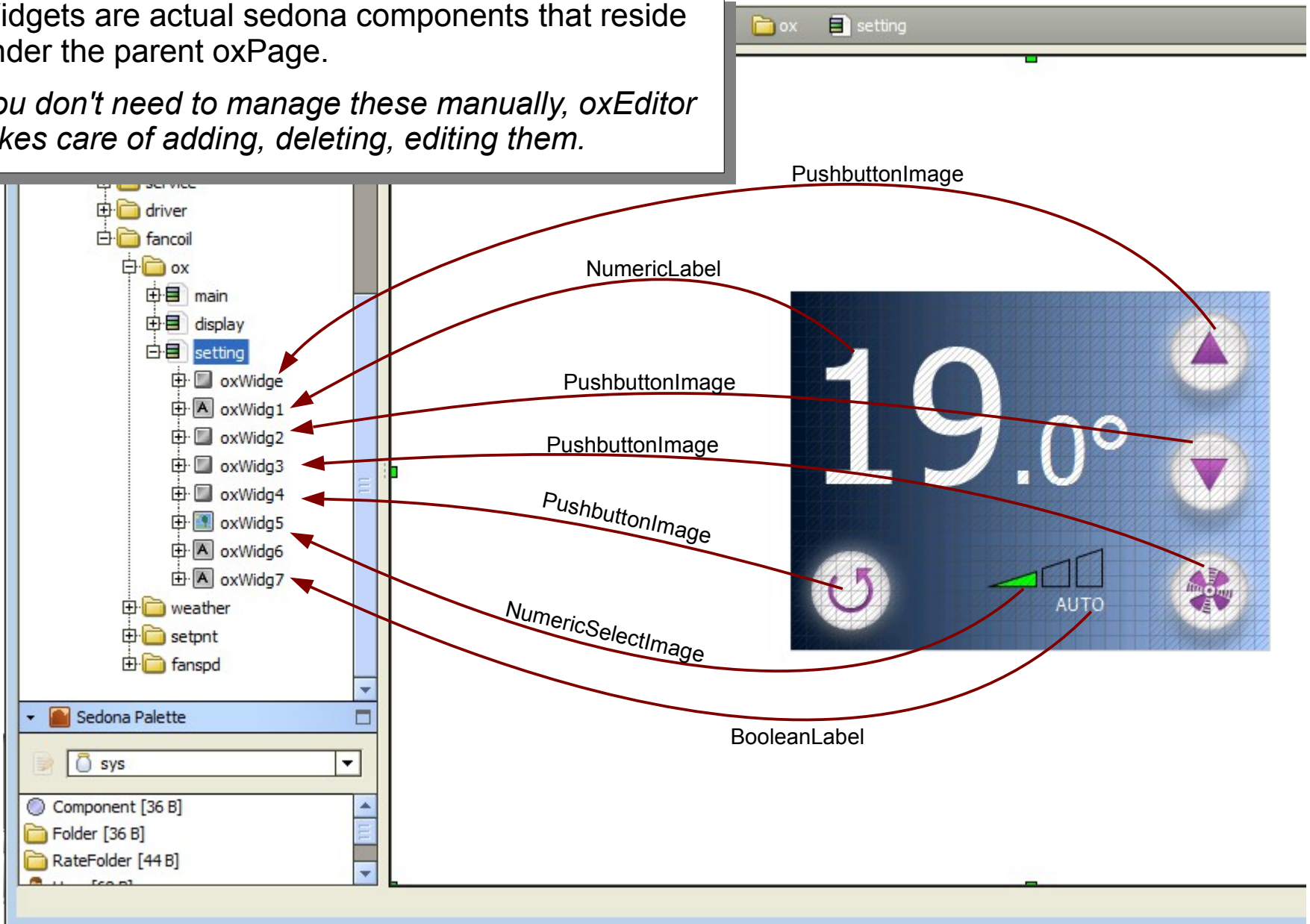
OxWidgets (under the hood)



Ox Widgets (under the hood)

Widgets are actual sedona components that reside under the parent oxPage.

You don't need to manage these manually, oxEditor takes care of adding, deleting, editing them.



Ox Widgets



Some specific OxWidget properties

Most oxWidgets and properties are exactly similar to standard Niagara px widgets or are intuitively understandable.

A few, though, may require explanation. These are covered in the following pages, specifically for the following widgets:

- NumericLabel
- NumericSelectLabel
- NumericSelectImage
- NumericLabelSet
- TimeLabelSet



labelText

Fixed text can be added before and/or after the live numeric value.

In the example below,

- the “Room : ” prefix is added before
- the degree sign (°F) suffix is added after the temperature value.

Precision (number of digits after the decimal point) can also be set.

backgroundColor / transparent

BackgroundColor is painted only if 'transparent' is set to false.

subscriptCharacters

Number of characters from the right to display at half size.





NumericSelectLabel usage

text

The text property should contain a range of texts, separated by semicolon (';')

The widget selects the display text from this range, based on its input data value.

Example: OFF;LO;MED;HI;

- 0: OFF
- 1: LO
- 2: MED
- 3: HI

The selection is always zero-based, you can not change this.

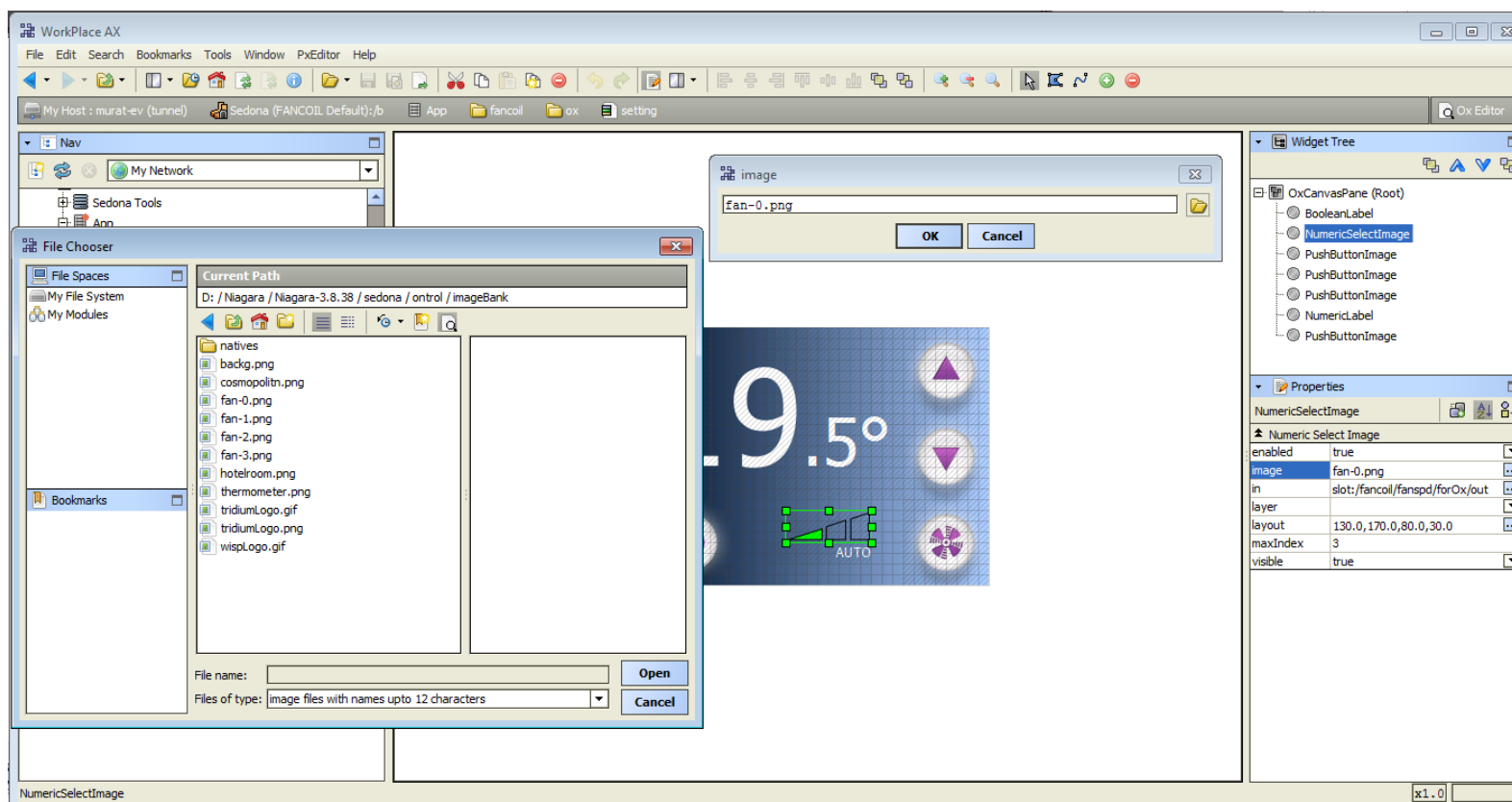
Always use a final semicolon to terminate the text range.



Image : Select the first one of a series of images. This is the image to be used when the linked data value=0. Its name *must* end with a '0'.

Subsequent images must use the same name, with only the last character changing to indicate the index value.

MaxIndex : This is used to determine how many image files need to be transferred to/from the device.





NumericKeypad Widget



This widget is typically used with a RegFloat component (in ontrControl kit) to display and modify non-volatile register values.

OPERATION

- This widget will display the value of the RegFloat.
- When touched, a full screen numeric keypad will cover the oxPage and a new value can be entered by the user.
- If the user enters a new value and touches ENT, the new value is saved and the display reverts back to the original oxPage.
- If the user touches ESC, the old value is not changed.

BINDINGS

The bindings between this widget and a RegFloat component should be made as follows:

- in property of the widget <<< value slot of the RegFloat
- out property of the widget >>> the in slot of the RegFloat



Default numeric value editing view



This widget is typically used with a RegFloat component (in ontrolControl kit) to display and modify non-volatile register values.

OPERATION

This widget will display the numeric value of associated slot.

When touched, a full-screen numeric keypad will cover the oxPage and a new value can be entered by the user.

If the user enters a new value and touches ENT, the new value is saved back to the associated slot.

If the user touches ESC, the old value is not changed.

min and max properties can be set to limit user input range.

BINDINGS

There is only one binding to the 'in' slot of this widget.

The changed value is written back to the same linked slot.

¹ Available starting with OntrolOx kit version 1.06

Default
numeric value
editing view





TimeKeypad Widget

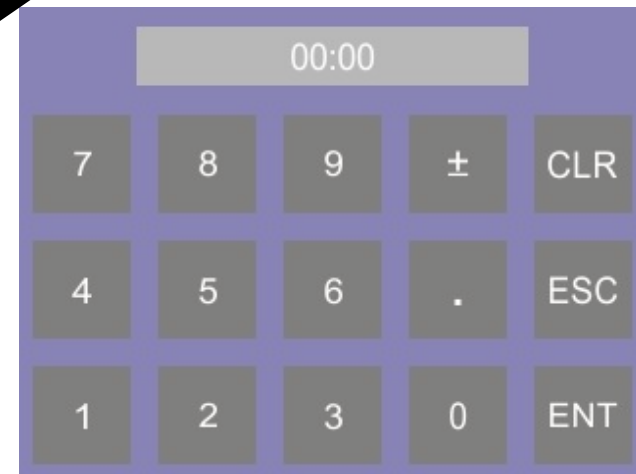


This widget is typically used to display time values in the format “hh:mm”

OPERATION

- This widget will display the value bound to its `in` property, interpreting it as “minutes after midnight”
- When touched, a full screen numeric keypad will cover the oxPage and a new time value can be entered by the user
- If the user enters a new time and touches ENT, the new value is saved back to the bound component/slot
- If the user touches ESC, the old value is not changed.

OBSOLETE



Default time value editing view



TimeLabelSet Widget¹



This widget is typically used to display time values in the format “hh:mm”

Time
LabelSet
usage

TimeLabelSet

OPERATION

- This widget will display the value bound to its in property, interpreting it as “minutes after midnight”
- When touched, a full screen numeric keypad will cover the oxPage and a new time value can be entered by the user.
- If the user enters a new time and touches ENT, the new value is saved back to the bound component/slot
- If the user touches ESC, the old value is not changed.



Default time value
editing view

¹ Available starting with OntrolOx kit version 1.06



OxPage design and editing workflow is very similar to standard Niagara px pages. There are, however, some crucial differences that you need to understand.

- Data binding
- Font handling
- Image handling
- Layering
- File transfers
- Buttons

These are explained in the following pages, except buttons, which are subject to a separate document.



Binding widgets to live data values

The 'in' slot of an oxWidget enables it to receive live data values from another sedona component.

The oxEditor provides a user-friendly way to link this 'in' slot to another sedona component.

Just click on the 'in' property of a widget, and you can select the source slot freely from the component tree of your App.

The linking will be automatically done for you.

The screenshot shows the oxEditor interface with several windows:

- Nav:** A tree view showing the project structure, including 'My Modules', 'Platform', 'Station (tunnel)', 'Sedona (FANCOIL Default):/s', 'App', 'service', 'driver', 'fancoil', 'ox', 'main', 'display', 'setting', 'weather', 'setpnt', and 'fanspd'.
- Select Ord:** A dialog box showing a tree view of components. The 'In' slot is selected under the 'forOx' component.
- Properties:** A panel showing the properties of the selected widget, 'NumericSelectImage'. The 'in' property is set to 'slot:/fancoil/fanspd/forOx/out'.
- Widget:** A 'NumericSelectImage' widget is shown on the canvas, displaying a temperature of '23.0°' and an 'AUTO' button.

Three numbered callouts indicate the steps:

- 1 Click 'in' property:** An arrow points to the 'in' property in the Properties panel.
- 2 Click 'open' button:** An arrow points to the 'Open' button in the 'in' property field.
- 3 Select slot from component tree:** An arrow points to the 'In' slot in the 'Select Ord' dialog box.

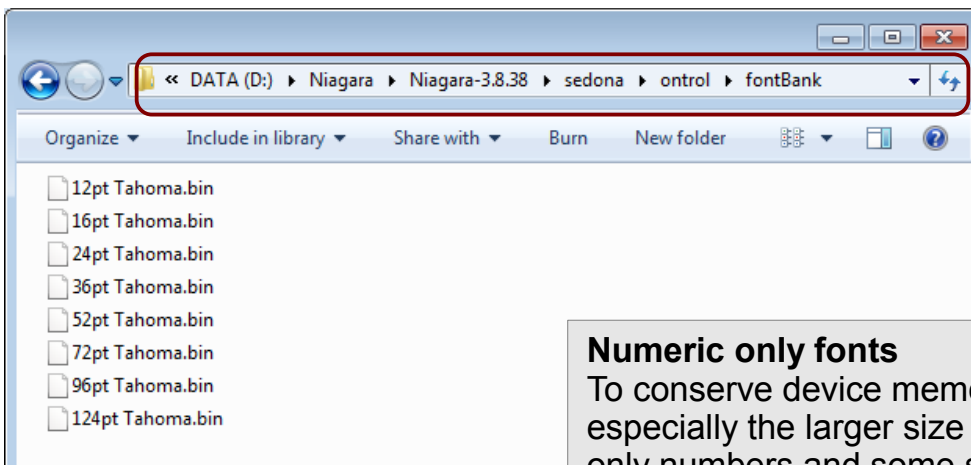
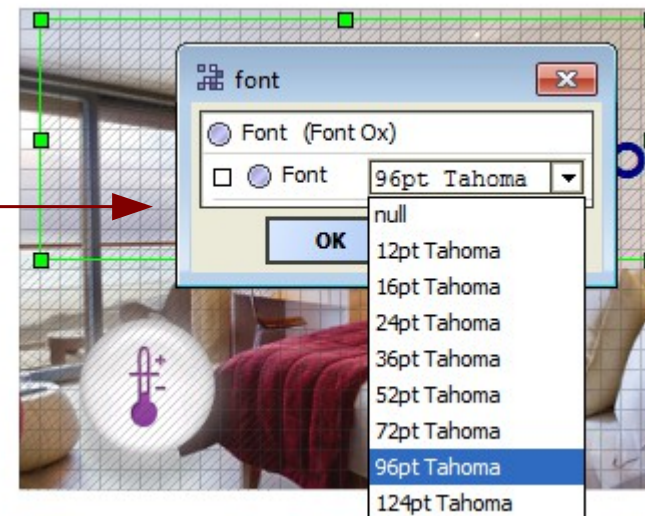


RION uses special native font files, which are typically transferred to the device during page design.

When you click on a oxWidget's **font** property, you will be presented with a list of fonts available on your system.

fontBank folder

Available RION font files are stored in a special folder:
{Niagara Installation}/sedona/ontrol/fontBank



Numeric only fonts
To conserve device memory, some font files, especially the larger size fonts, may contain only numbers and some symbols, but no letters. When you attempt use these fonts to display text, letters will not display properly.



- You can use GIF, JPG or PNG images
- Your image must be in the imageBank folder {Niagara Installation}/sedona/ontrol/imageBank
- The name must be at most 12 characters long

1 Click 'image' property

2 Click 'open' button

3 Select file from imageBank folder

Widget Tree: OxCanvasPane (Root) - PushButtonImage, NumericLabel

Properties: OxCanvasPane - backgroundCol, enabled, image (hotelroom.png), layer, returnPageId, touchTimeout, viewSize, visible



OxWidgets : Images

notes concerning conversion to device format



Notes on images

Color Depth

When you save an OxPage, the images are converted to a native format before being transferred to the device. This may cause a reduction in color depth.

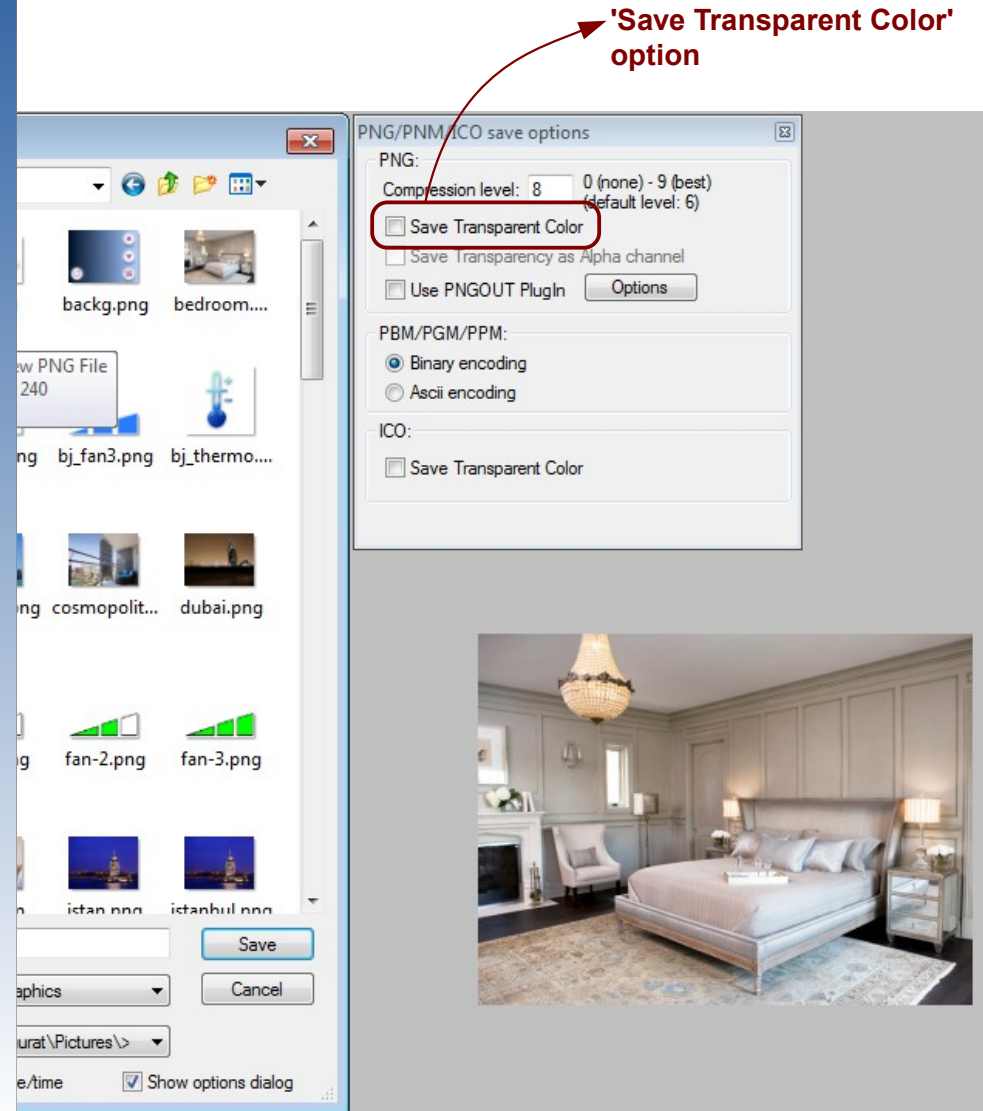
(The native format supports 65535 colors)

Transparency

When images containing transparency information is converted to native format for saving to device, they will result in considerably larger files.

Many image editing programs will let you choose whether you want to include transparency when saving an image. If you know you don't need transparency, make sure you save your image without transparency info.

Example on right from “IrfanView” software



Images



There is no layering !

You should never place overlapping widgets on an oxPage. There is no logical way to guarantee in which order the widgets are painted. Even if your page view looks right, it might well change after the next save or after an update. So,

***** AVOID OVERLAPPING WIDGETS *****

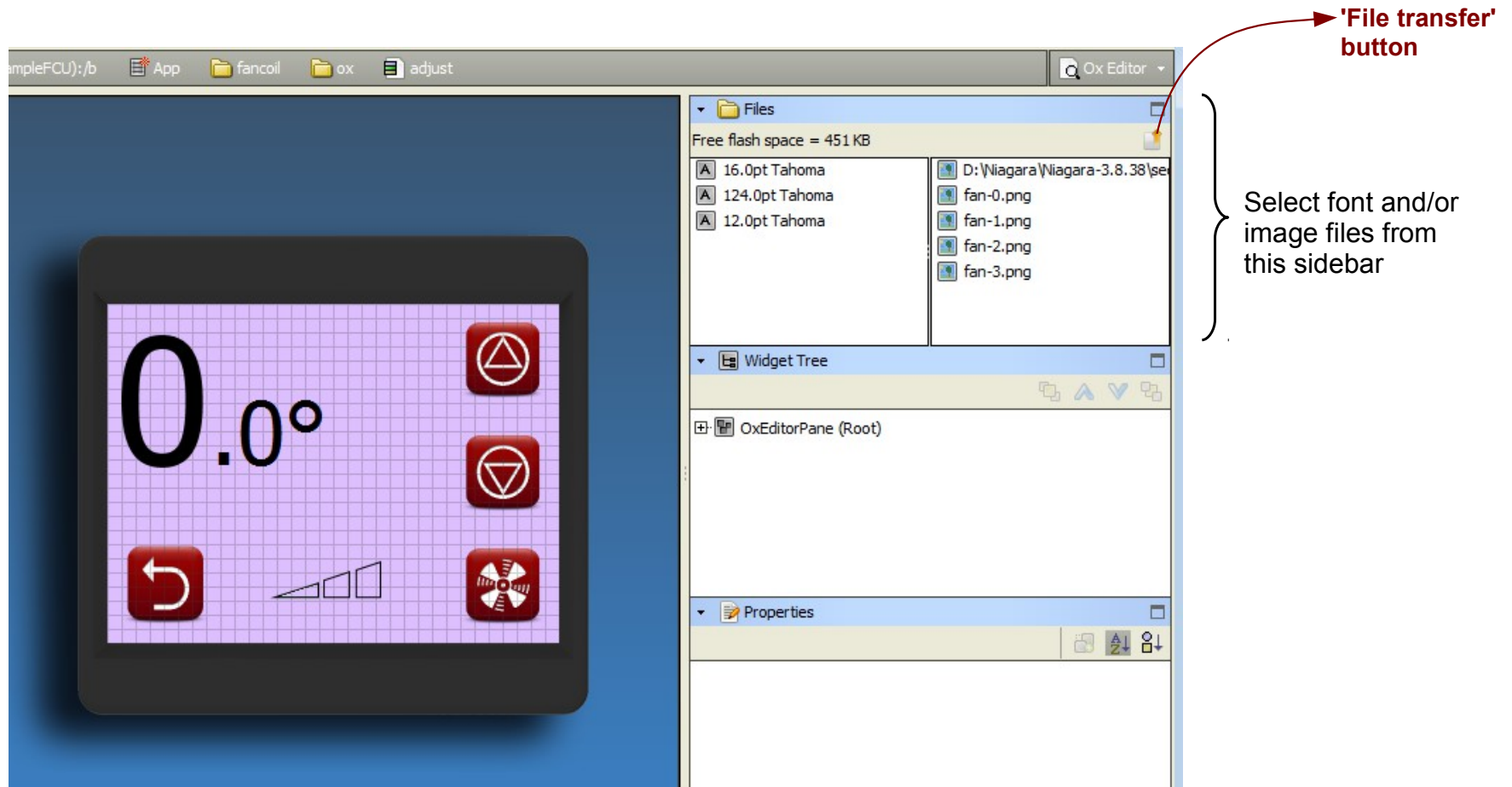


Transfer font and image files to the device

File Transfers

Your oxPages will be using a number of font and image files. These need to be transferred to the device to be displayed on the touch-screen.

Use the Files sidebar to select and transfer files to the device.





Warning
about
memory



IMPORTANT MEMORY WARNING

As you work on your oxPage designs, you will have transferred many images and fonts to the device, some of which are probably not being used. (You tried something, changed your mind, tried another image...)

Since the oxEditor transfer doesn't delete any existing files from the device, you might run into a memory issue at some point.

To reclaim memory :

- Double-click on the RionPlt service to open OxFileTransfer view
- Click the button labeled 'Cleanup device memory'

This will first clear all files from device memory, then transfer only the required ones, thus reclaiming space.



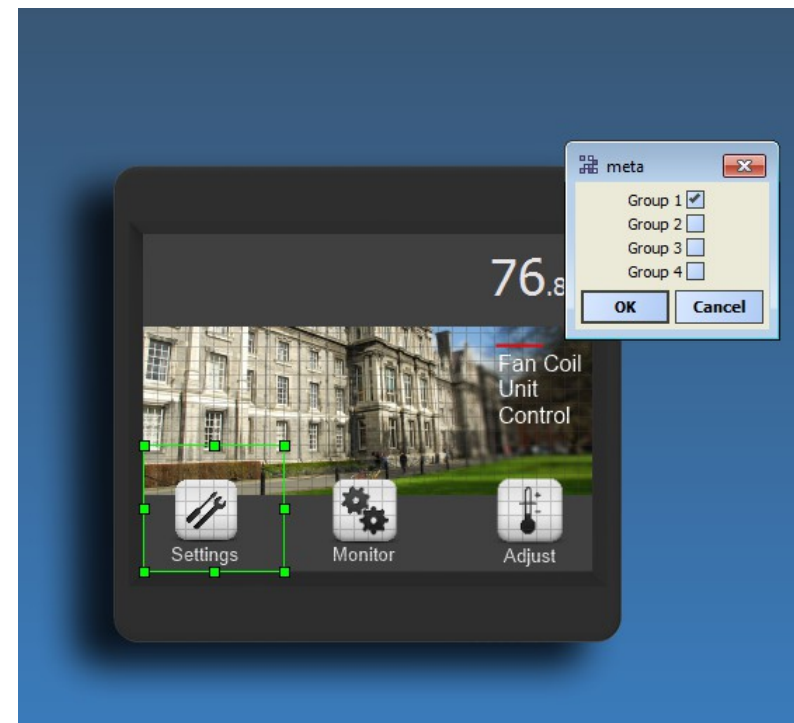
Ox pages and widgets can be categorized and password protected.

The security scheme makes use of the standard Sedona UserService permissions.

To setup password-protected pages:

- 1) Double-click on the 'users' service and:
 - add additional user(s) with unique¹ numeric² passwords.
 - set read/write group privileges for these new users³
- 2) In OxEditor, set the 'meta' property of widgets (typically buttons) to limit access to certain groups.

When a user clicks (touches) a security-limited button, he/she will be presented with a numeric keypad to enter the password. The hyperlink will work only if the entered password matches a user with access permissions for the set category.



¹ The password for each user needs to be unique. Do not use the same password for more than one user.

² The passwords need to be numeric. Do not use letters. Only digits are allowed.

³ All widgets, components and pages are member of Group1 by default, unless specifically modified.