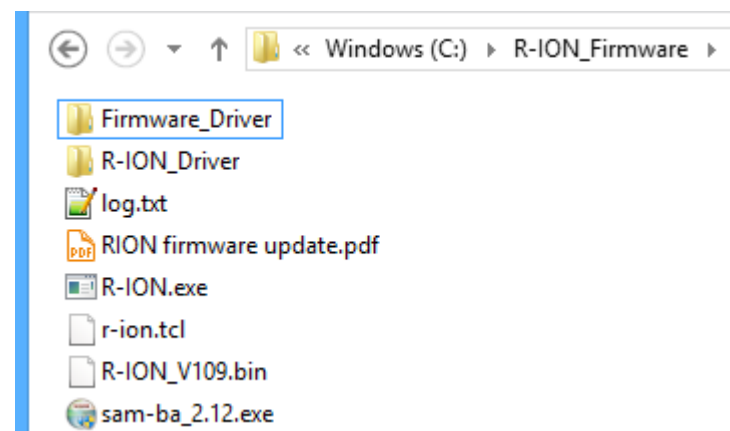




R-ION Firmware update step 1



- Download latest update files from : <http://www.ontrol.com/rion>
- Unpack zipped file to your haddisk



The path should not contain any spaces or non-english characters
(illegal path example :
C:\Users\John Doe\Documents\Desktop\R-ION_Firmware)



R-ION Firmware update step 2



**** ONLY If this is the first time you are doing a firmware update on this PC ****

Run the SAM-BA installer (sam-ba_2.12.exe)
if you haven't done so previously.



Follow instructions to
complete ATMEL SAM-BA
setup



R-ION Firmware update step 3

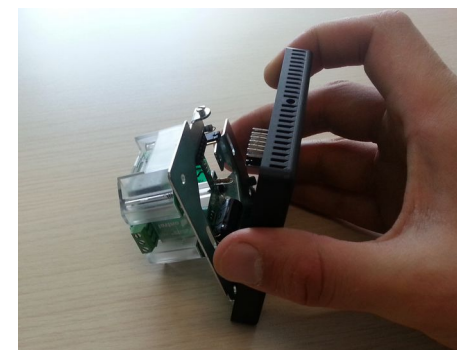


Initialize R-ION

- Make sure power is off :
 - disconnect / turn-off power connection
 - and disconnect the USB cable
- Disengage R-ION display part (front) from the metal frame.
- Older devices : Install the shorting-block (supplied) on the two jumper pins on the backside.
Newer devices : keep the small button on the backside pressed for the next step
- Connect the USB cable to PC for a few seconds.
Disconnect again.
- The R-ION is now “initialized”
Memory has been erased and it will be waiting for a new firmware update.
- Remove the shorting-block from the jumper pins (older devices).
- Connect the USB cable to your PC.
If this is the first time, Windows will recognize RION as a new device, and try to search for and install a driver. Interrupt this automatic installation by clicking No when prompted.



CAUTION :
This will erase the existing application and all image/font files on the device.



Use a good quality USB cable.
Poor quality cables are known to cause problems.



R-ION Firmware update step 4



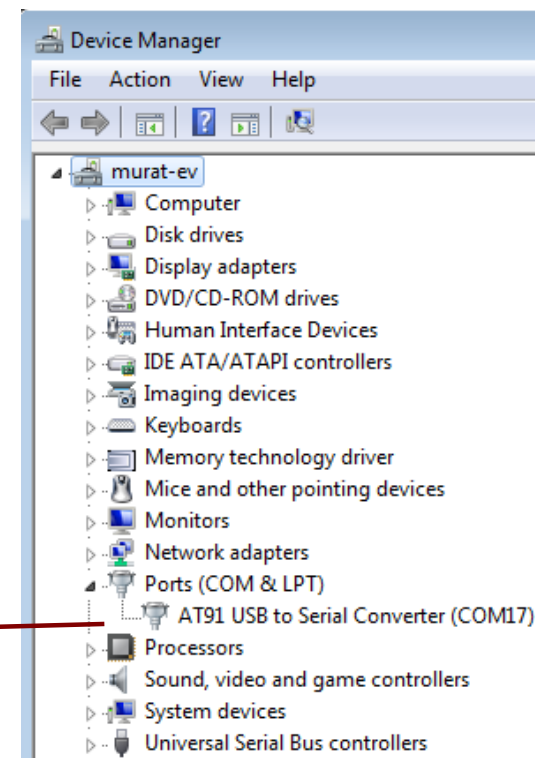
**** ONLY If this is the first time you are doing a firmware update on this PC ****

- When you connect the USB cable, windows will search for and install the driver that came with SAM-BA.

This will work, but the R-ION may appear as a 'GPS Camera' in the Device Manager on some operating systems. We therefore recommend that you interrupt the automatic driver installation by clicking No when prompted by windows and follow the instructions below.

- To install the driver
 - Go to ControlPanel > System > DeviceManager
 - You will see the RION as an “unidentified device”(or 'GPS Camera Detect')
 - Right-click on it and select 'Update Driver Software'
 - Select the atm6124_cdc.inf file that came with the firmware update package
 - Wait for the driver installation to finish.

When successfully installed,
the usb connection should appear
under Ports in Device Manager

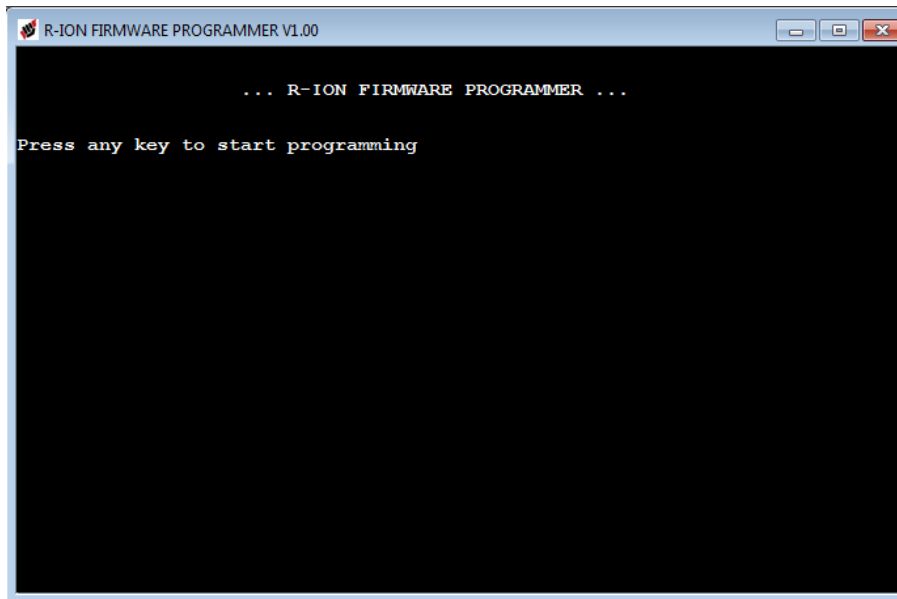




R-ION Firmware update step 5



- Run the R-ION firmware update utility (R-ION.exe)



- Press any key
- You should see a “success!” message (with a green background) if the update has been successful
- Restart the RION by momentarily disconnecting power-supply and USB cable.