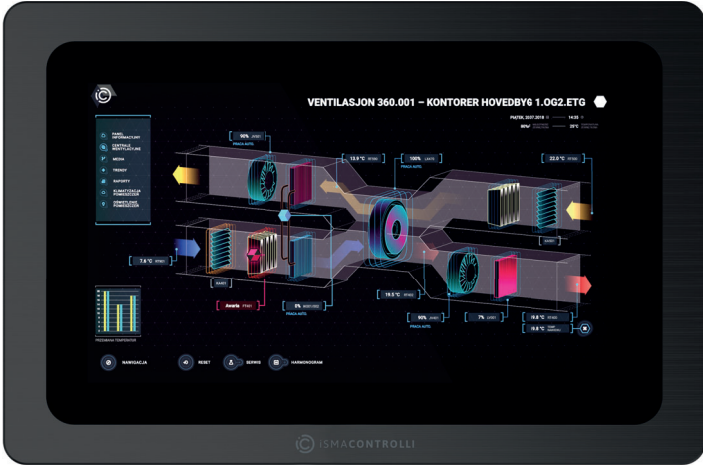


## 15.6" Industrial PC Panel

MODEL	DESCRIPTION
iSMA-D-PA15C-B1	15.6" industrial PC panel with Android 11 and iC SmartView platform for IP controllers equipped with a web server
With dedicated power adapters:	
iSMA-D-PA15C-B1-EU	includes 12 V DC/110-240 V AC EU plug power supply adapter
iSMA-D-PA15C-B1-UK	includes 12 V DC/110-240 V AC UK plug power supply adapter
iSMA-D-PA15C-B1-US	includes 12 V DC/110-240 V AC US plug power supply adapter



### APPLICATION AND USE

The iSMA-D-PA15C-B1 is a 15.6" industrial PC panel with the Android 11. It has been designed to simplify connection and visualisation of any HTML5 web server-based controller. Devices such as the MAC36, JACE-9000, or Niagara-powered Supervisor can be connected over IP to the panel and display local visualization. Thanks to the iC SmartView platform dedicated for Android panels, the setup, visualization, and management is very easy and takes only a few moments. The platform is equipped with Kiosk mode, allows auto login to one or multiple stations, and allows selecting one device as a home station, which will always login to the panel after power cycle. The aspect ratio of 16:9 with the 1920x1080 resolution enables a clear display of graphics. The panel is VESA compliant and can be wall-mounted. It has an extensive menu in 7 languages, allowing easy customization of the displayed image. Available with EU, UK, or US power adapter.

### FEATURES

- Android 11 operating system
- 15.6" display with capacitive touch screen
- Aspect ratio 16:9
- Resolution 1920x1080
- Response time 5 ms
- IP65 for front panel
- Aluminum alloy enclosure
- VESA compatible
- Available with EU, UK, or US power adapter

### DEDICATED SOFTWARE



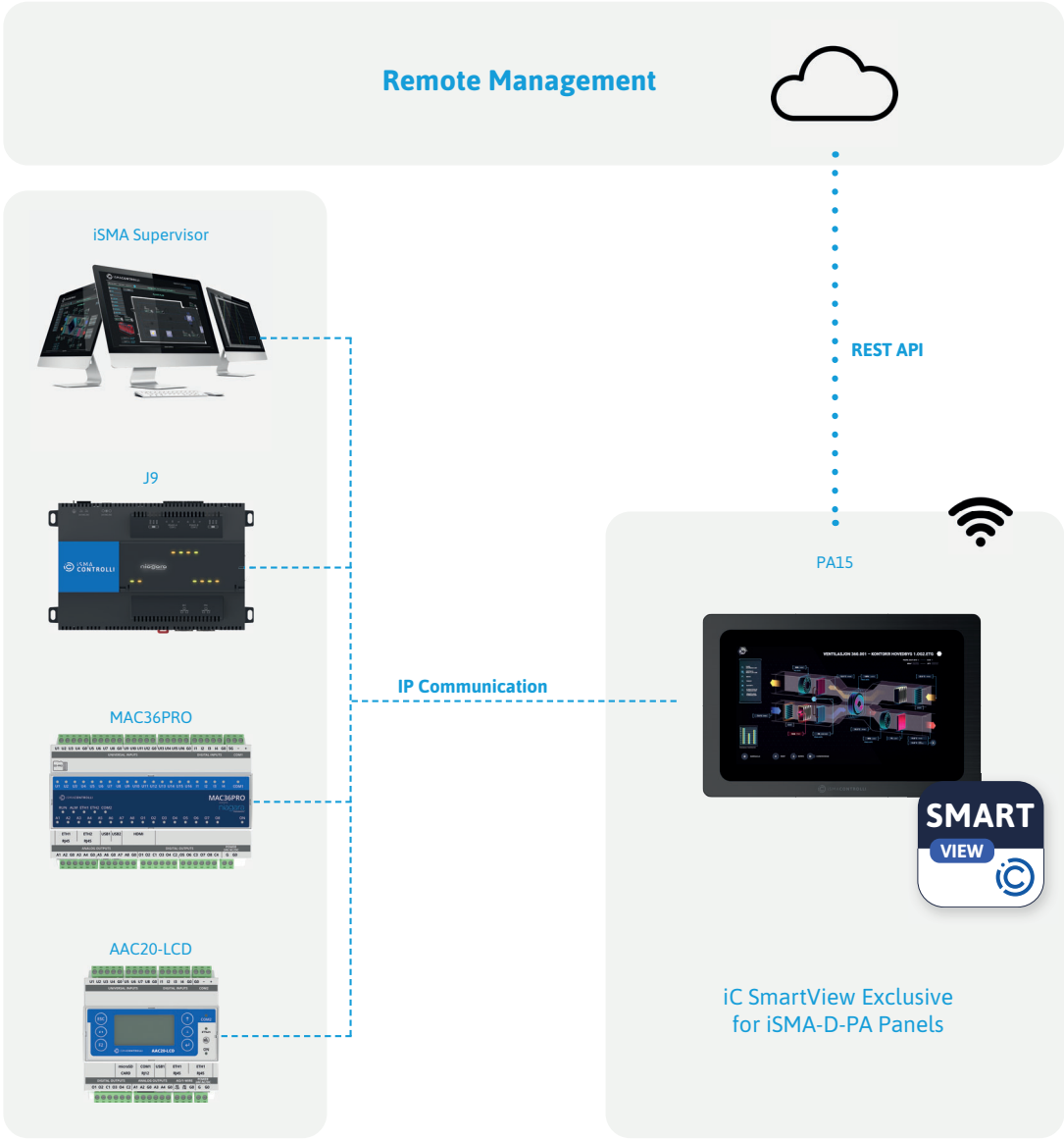
iC SmartView - app designed for iSMA CONTROLLO Android panels, HTML-based controllers management platform for seamless device access throughout the building

### iC SmartView FEATURES

- Exclusive for iSMA CONTROLLO Android panels
- Support for multiple device views including Niagara stations and HTML5 web servers
- HTTPS support
- Autologin
- Home station that autostarts with the app
- Autoupdate
- Kiosk mode
- Quick start guide
- Screensaver
- PIN protection of each view
- Export settings to a file
- Import settings from a file
- Remote management using built-in web service, Niagara Service, and RESTful API

The performances stated in this sheet can be modified without any prior notice.

DESCRIPTION		15.6" PC PANEL
Power supply	Voltage	110-240 V AC, 50/60 Hz
	Power input	12 V DC
	Power adapter	EU, UK, or US
Display	Screen type	LCD, backlight lifetime ≥50000 h
	Touch type	10-point capacitive touch screen
	Size	15.6 in
	Aspect ratio	16:9
	Resolution	1920x1080
	Contrast	1000:1
	Luminance standard	300 nit, up tp 1000 nit
	Response time	5 ms
	Active area	344.20x193.60 mm/13.55x7.62 in
	Display colors	16.7 M
	View angle	80/80/80/80
Interfaces	COM1	RS232
	COM2	RS232
	Audio	Audio output
	ETH1	RJ45 port
	ETH2	RJ45 port
	USB1	USB C OTG
	USB2	USB 2.0
	USB3	USB 3.0
	HDMI	HDMI port
	TF/SD card	TF/SD card slot
	SIM	SIM card slot
Ingress protection	IP rating	IP 65 for front panel
Temperature	Storage	-10°C to 60°C (14°F to 140°F)
	Operating	0°C to 60°C (32°F to 140°F)
Humidity	Relative	10 to 80% RH
Housing	Material	Aluminum alloy enclosure
	Mounting	VESA compatibility, wall mounting
Dimensions	Width	420.00 mm/16.53 in
	Length	269.00 mm/10.59 in
	Height	70.00 mm/2.75 in



DIMENSIONS [mm]

