

iSMA EC 2D Graphics Library

iSMA EC 2D Graphics library is a comprehensive high quality graphics library for HVAC applications operating in the **Niagara Framework** environment.

This library introduces a wide range of high-quality 2D graphic widgets, whose images depict building systems and devices required on system visualization screens. The design of the images, compatible with Niagara 4, allows intuitive recognition.

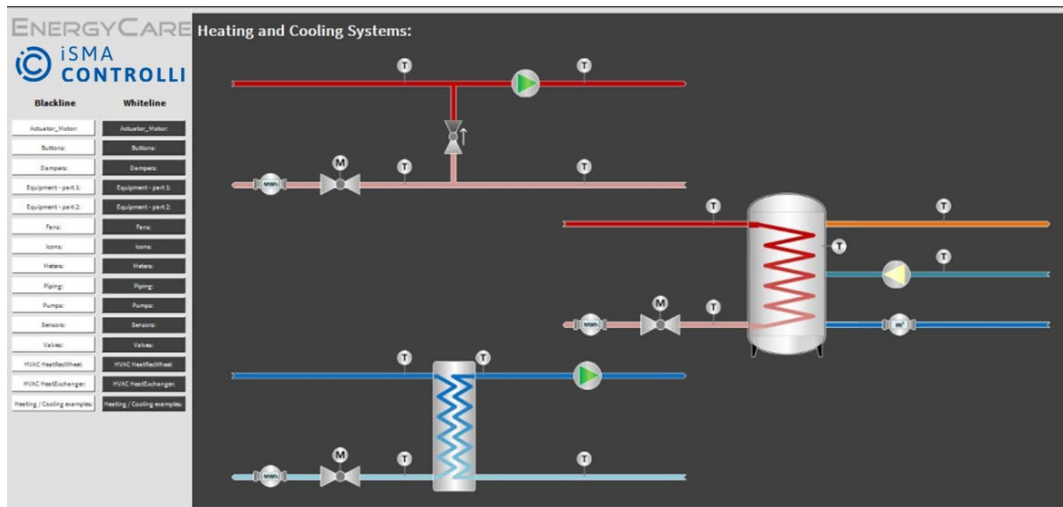
The library covers HVAC related equipment such as heating, cooling, air-handling and other building control devices like, metering, piping and motion detection.

Graphics Library can be tested and overviewed based on the demo station.

The library has been developed in cooperation with the EnergyCare company. In order to work unimpededly, the library requires the gc5LibGraphics2d for iSMA-B-MAC36NL by default.

Key Features

- Designed to use with iSMA-B-MAC36NL powered by Niagara 4 Framework
- Library licensed exclusively for iSMA-B-MAC36NL series
- Comprehensive range of images, including HVAC equipment, Fans, Meters, Pumps and more
- Equipment enabling creation of high quality, modern, and colored 2D graphics representing plant items and devices
- Intuitive, fresh-looking, and colorful design
- Developed in cooperation with EnergyCare
- Available in blackline and whiteline



iSMA-SW-N4-ECGFX-2D

Specification

Range

- Icons
- Blackline/Whiteline:
 - ❖ Actuator_Motors
 - ❖ Buttons
 - ❖ Dampers
 - ❖ Equipment
 - ❖ Fans
 - ❖ Icons
 - ❖ Meters
 - ❖ Pipes
 - ❖ Pumps
 - ❖ Sensors
 - ❖ Valves

